

DCP-2000™

Digital Cinema Server

DCP-2000™

Multi-File Playback | 2D & 3D Playback | 2K & 4K Playback
Enhanced Security | Captioning Device Control | CineLister



The DCP-2000 cinema server provides superior reliability, image quality and an unmatched feature set. Each DCP-2000 reflects Doremi's thirteen years of image server design and manufacturing experience and the benefits of supporting the world's largest cinema server installation.

The DCP-2000 supports JPEG2000 and MPEG2 files. In addition it features REAL D, XpanD, and dual-projector 3D playback, external control of captioning devices and 4K resolution playback.

Each DCP-2000 server includes the CineLister software utility that provides effortless scheduling and playlist administration. Playlists can include both JPEG2000 and MPEG2 movie files, and pre-show content files.

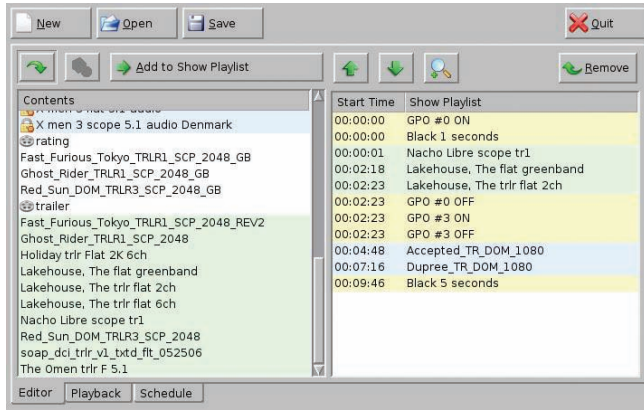
The DCP-2000 was the first commercially available server capable of playing JPEG2000 digital movies conforming to DCI specifications. Today, it is by far the most installed cinema server with over 5500 units worldwide.

Any Screen, Any Projector, Any 3D System.

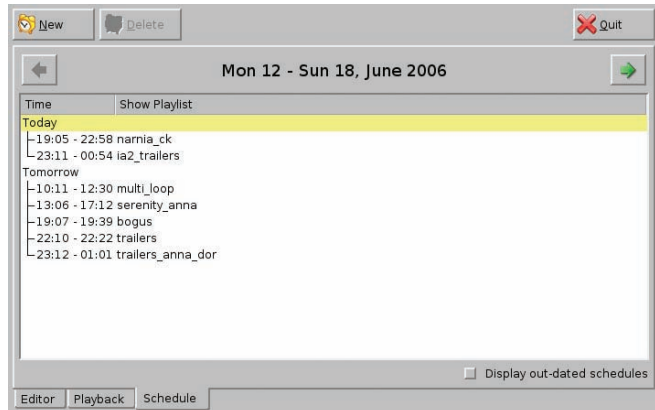
doremi
cinema

CineLister SOFTWARE

Multiple Language Packs for GUI Regionalization Now Available.



Event Editing Screen



Play List Scheduling Screen

CineLister allows the operator to build and play composition playlists as well as full session playlists. Playlists can include both JPEG2000 and MPEG2 movie files and pre-show content files. The graphic user interface simplifies the management of image files and creation of new image clips. CineLister's extensive playlist creation capability can be used for on-line playback and play list scheduling.

SPECIFICATIONS

PLAYBACK

JPEG2000 2K or 4K movie and pre-show file playback at 2K resolution
 12-bit 444 (XYZ, RGB) on dual link HD-SDI
 MPEG2 MXF interop movie, pre-show and alternative content file playback
 JPEG2000 4K movie file playback at 4K resolution (option)
 3D - JPEG2000 movies and 48p playback via Dual 10-bit 422 (YpPr/YcxCz)

SECURITY

TI's CineLink II Strong Link Encryption
 Thomson's NexGuard Forensic Watermarking
 Philips' CineFence Forensic Watermarking
 FIPS 140-2 Level 3 Security Certified

INTERFACE

Gigabit Ethernet for file transfer
 Gigabit Ethernet for control & subtitling
 RS-422 serial control port
 USB2.0
 External control of captioning devices
 WGBH & PCS (Option)

STORAGE

Up to 2TB of RAID5 storage

AUDIO

Default:
 AES/EBU audio 16 channels:
 -Single DB-25 connector.

Additional Options:

Balanced or unbalanced analog audio 8 channels:
 -External digital audio (DB-25) to analog audio
 converter in a 1RU rack mount chassis (AUD-D2A product).

GPIO

8 optically isolated inputs
 8 open collector outputs



INGEST INPUTS

USB
 Ethernet

VIDEO OUTPUT

Dual link HD-SDI
 with physical link encryption

OUTPUT RESOLUTION

-Dual link
 2048 x 1080 24p 4:4:4 12-bit
 -Two single links
 2048 x 1080 24p 4:2:2 10-bit

POWER

Dual-Redundant Power Supply
 100-240VAC 50-60Hz (2x400W)

DIMENSIONS

4U Rack Unit
 19" x 22" x 7" inch
 (48 x 56 x 19 cm)
 Weight 48lbs/22Kg

Doremi Cinema LLC, Burbank, California USA
 tel +1-818 562-1101 - www.doremicinema.com
 Doremi Labs, Europe Sophia Antipolis, France
 tel +33 (0) 492 952 830 - www.doremilabs.fr
 Doremi Labs LLC - Japan Tokyo, Japan
 tel +81 (0) 3 3370 0401 - www.doremilabs.co.jp

DCP-2000 Broch. Version | Specifications may change without notice | CineFence is a trademark of Philips Electronics | CineLink II is a trademark of Texas Instruments | NexGuard is a trademark of Thomson

doremi
 cinema